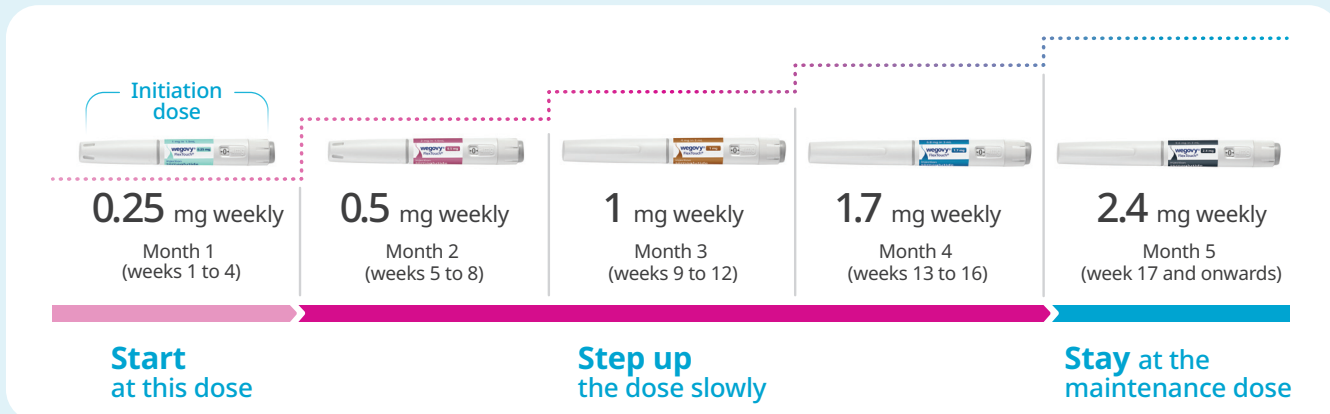


Get started with Wegovy[®] semaglutide injection



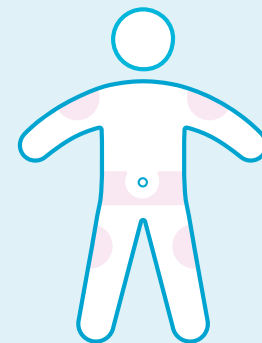
How do I start taking Wegovy[®]?

Starting at a once-weekly dose of 0.25 mg, your doctor will slowly increase your dose over 16 weeks with the aim of reaching the recommended maintenance dose of 2.4 mg once weekly. Remember to always follow the dosing schedule recommended by your healthcare provider.



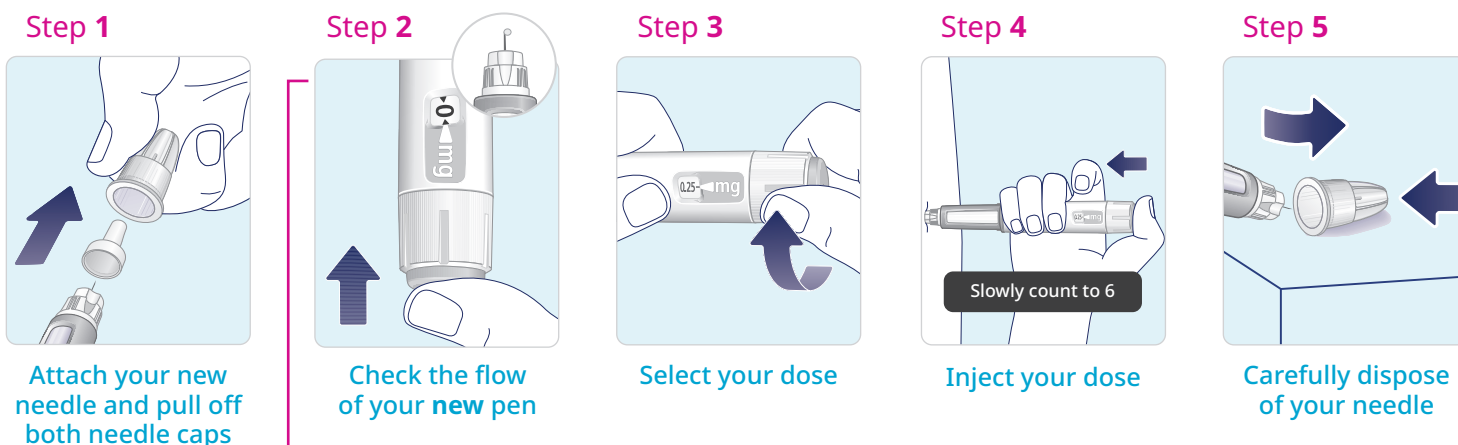
Where do I administer Wegovy[®]?

Choose between the upper arms, stomach, or upper legs (keep a 5 cm distance from your belly button). You may administer in the same body area each week, but make sure it is not in the same spot as used the last time.



How do I use my Wegovy[®] FlexTouch[®] pen?

Before you use Wegovy[®] for the first time, **ask your healthcare professional** to show you how to use your Wegovy[®] FlexTouch[®] pen, and read the full instructions for use in the Patient Information Leaflet that came with your prescription.



IMPORTANT! You only need to check the flow if you are using a **NEW** pen. If your pen is already in use, **DO NOT** check the flow and move to **STEP 3**.

Please refer to the Patient Information Leaflet that came with your Wegovy[®] prescription for complete instructions.

* This landing page is open to the general public.



Want a closer look?
Scan or visit [wegovy.ca](https://www.wegovy.ca)*
to watch a step-by-step video
on how to take Wegovy[®].



What if I forget to take my dose of Wegovy®?



5 days or less
SINCE MISSED DOSE

Take Wegovy® as soon as possible.

Then inject your next dose as usual on your scheduled day.



More than 5 days
SINCE MISSED DOSE

Skip the missed dose.

Then inject your next dose as usual on your scheduled day.

How can I help manage the most common Wegovy® side effects?

Like all medicines, Wegovy® can cause side effects, although not everybody gets them. Some of the most common side effects of Wegovy® are gastrointestinal in nature (nausea, vomiting, diarrhea, constipation, stomach pain) and usually go away over time. If you experience these, the following lifestyle tips may help:



Eat smaller meals



Be mindful of eating when you are full



Increase your water intake



Limit high-fat and spicy foods



Limit intake of fizzy drinks

Refer to your Patient Information Leaflet for other possible side effects. Talk with your healthcare provider about any side effects you experience as they may be able to offer advice on how to manage them.

Support while taking Wegovy®

novo nordisk **care**
PATIENT SUPPORT PROGRAM



Drug Coverage Navigation

Help navigate your private insurance coverage and paperwork required to get medication costs covered.



Educator Support

Experienced healthcare professionals are just a phone or video call away to support you with:

- ✓ Taking your Wegovy® as prescribed
- ✓ Managing possible common side effects
- ✓ Understanding your condition and how to manage it



Resources

Available at:
wegovy.ca†

Savings card available*

Pr **wegovy**
semaglutide injection

Enrol now at wegovy.ca†
For access, use DIN 02528509



* Exclusions may apply. The user may still be responsible for costs not covered by their Novo Nordisk Care® savings card.
† This landing page is open to the general public.
The Novo Nordisk Care® program is valid for Canadian residents only. Availability of this program may change or end at any time at the manufacturer's discretion. For more details, see the Program terms and conditions. Coverage eligibility is determined by the patient's insurance provider and/or plan sponsor. Novo Nordisk Canada Inc. cannot guarantee coverage approvals.

DIN, drug identification number.

All trademarks and registered trademarks are the property of their respective owners.
Wegovy®, Novo Nordisk Care®, FlexTouch®, and Apis Bull Design® are registered trademarks of Novo Nordisk A/S used under licence by Novo Nordisk Canada Inc.
Novo Nordisk Canada Inc., tel: (905) 629-4222 or 1-800-465-4334.
© Novo Nordisk Canada Inc.
www.novonordisk.ca
CA26SEMO00030



Pr **wegovy**
semaglutide injection